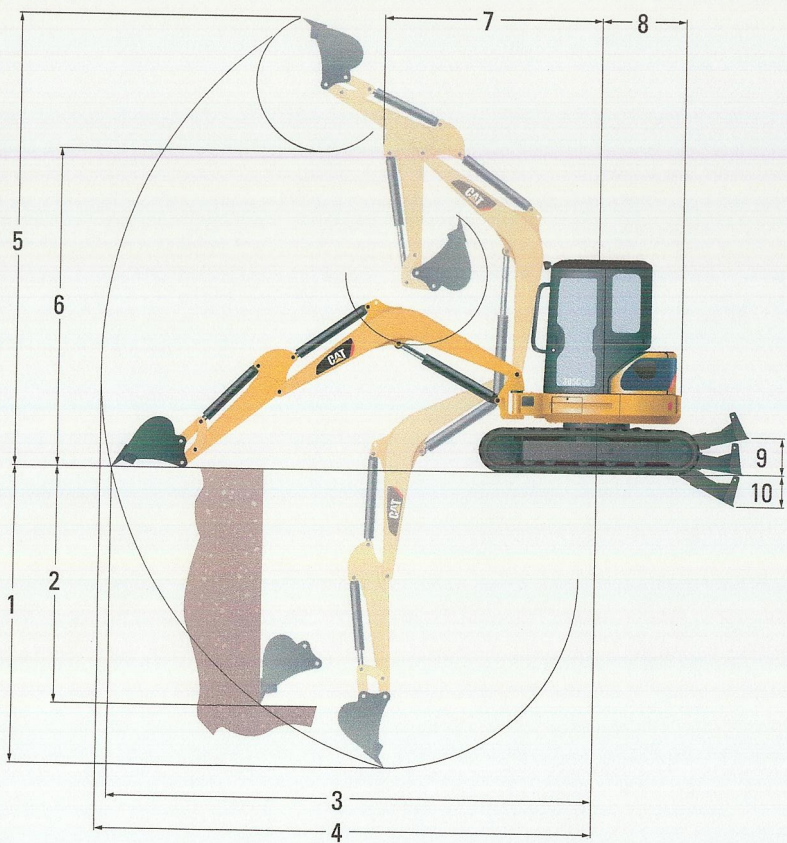
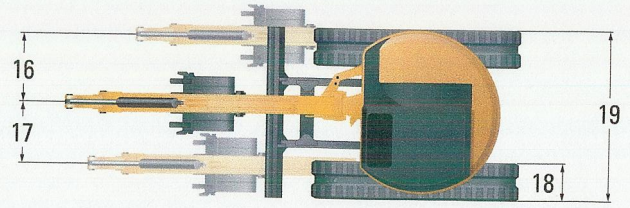
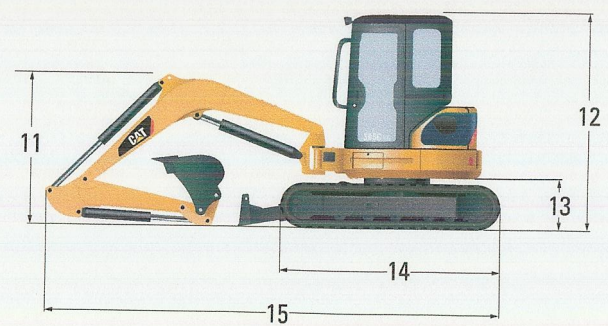


Dimensions and Lift Capacities



Track and blade width	1980 mm
Gauge width	1580 mm
Shoe width	400 mm



	Standard mm	Sticks Long mm
1	3490	3890
2	2530	2940
3	5650	6050
4	5810	6200
5	5370	5630
6	3800	4050
7	2400	2530
8	990	990
9	420	420
10	540	540
11	1730	2090
12	2550	2550
13	615	615
14	2580	2580
15	5330	5460
16	785	785
17	695	695
18	400	400
19	1980	1980

With tracks level on the ground

	mm	Over front	Over side	Over front	Over side
Lift Point Radius		3000		5330	
Blade down	kg	*2580	1100	*890	460
Blade up	kg	1330	980	550	410

* Limited by hydraulic capacity rather than tipping load.
 The above loads are in compliance with SAE hydraulic excavator lift capacity rating standard SAE J1097 and they do not exceed 87% of hydraulic lifting capacity or 75% of tipping capacity.
 The excavator bucket weight is not included on this chart. Lifting capacities for standard stick.